

# An Introduction to Solid Waste and Source Segregation



**aviral**

Reducing Plastic Waste  
in the Ganga

Powered by:



Implemented by:



In Coordination with:



# What is Aviral?

**Aviral is a pilot project to reduce the plastic waste entering the Ganga in Haridwar and Rishikesh. The project is supported by the Alliance to End Plastic Waste and implemented by GIZ, in coordination with SAAHAS NGO and Waste Warriors Society.**



# Let's begin!

**HOW MUCH DO YOU  
KNOW ABOUT WASTE?**

**Fill in the google form with as much as you know.**

**Don't worry! This is not a test. 😊**





# What does the Ganga mean to you?





# WHAT WE SEE





# WHAT WE DON'T







**What is  
Waste?**





# Wet Waste

(Biodegradable)



**Vegetable/  
Fruit peels**



**Leftover  
food**



**Leaf plates  
and bowls**



**Egg Shells/  
Meat Bones**



**Flowers and  
leaves**

50-60%  
of waste  
generated



# Dry Waste

(Non-Biodegradable)



30%  
of waste  
generated



**Plastic**



**Metal**



**Paper**



**Glass**



**Tetra Pak**



**Textiles**



# Domestic Hazardous Waste



**Sanitary pad**



**Diaper**



**Expired medicines**



**Toilet paper**



**Used face mask & gloves**

**10-20%  
of waste  
generated**



# Where does our waste go?



**Open  
dumping  
spots**



**City Dump Site**



**Ganga**



# What can we do?

Segregating our waste at home



जैविक



अजैविक

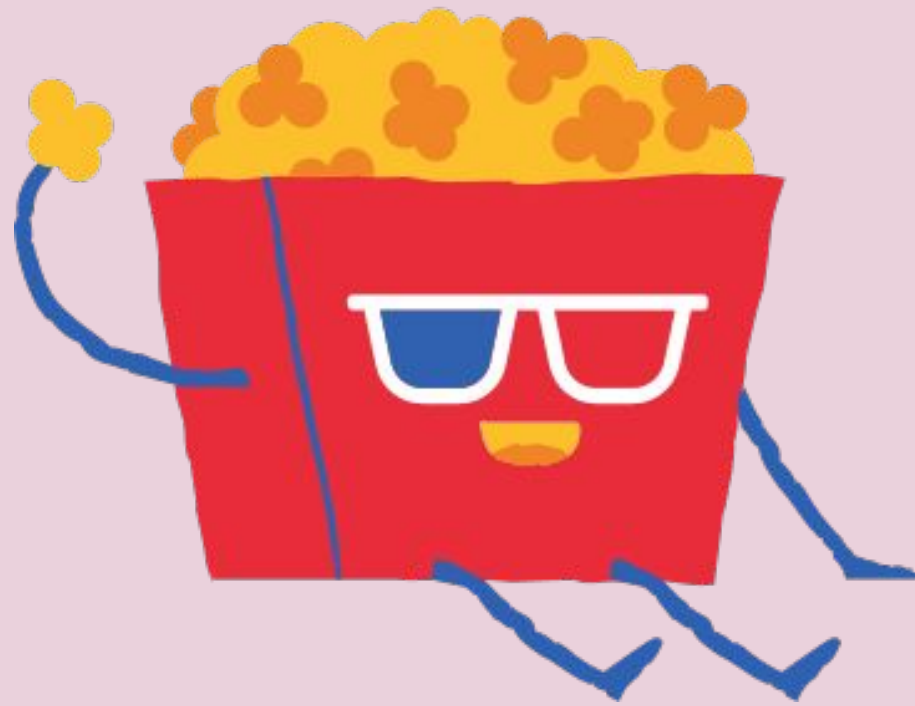


घरेलु हानिकारक





# Time for A Video!





# Why should we segregate our waste?



**Enables reduction in greenhouses gases entering the atmosphere**



**Reduces waste entering the environment and the Ganga**



**Enables composting to enrich the soil**



**Improves the potential for recycling**



**Supports safety of waste workers during their work**



**Required by law**



# Activity Time

## BE A GARBAGE DETECTIVE

**Here is the mission:**

**STEP 1 - A survey sheet will be shared with you by your teacher after this session**

**STEP 2 - Note down the survey questions on a paper and keep them handy as you become the detective**

**STEP 3 - Gather information needed in the survey from your parents/other members of the family**

**STEP 4 - Bring the survey sheet in the next session in the third week and participate in the activity that day**





# Any questions?

See you in the next class and  
remember to complete your  
mission!





# Thank You!



**aviral**

Reducing Plastic Waste  
in the Ganga

**Supported by:**



**Implemented by:**



**In Coordination with:**

